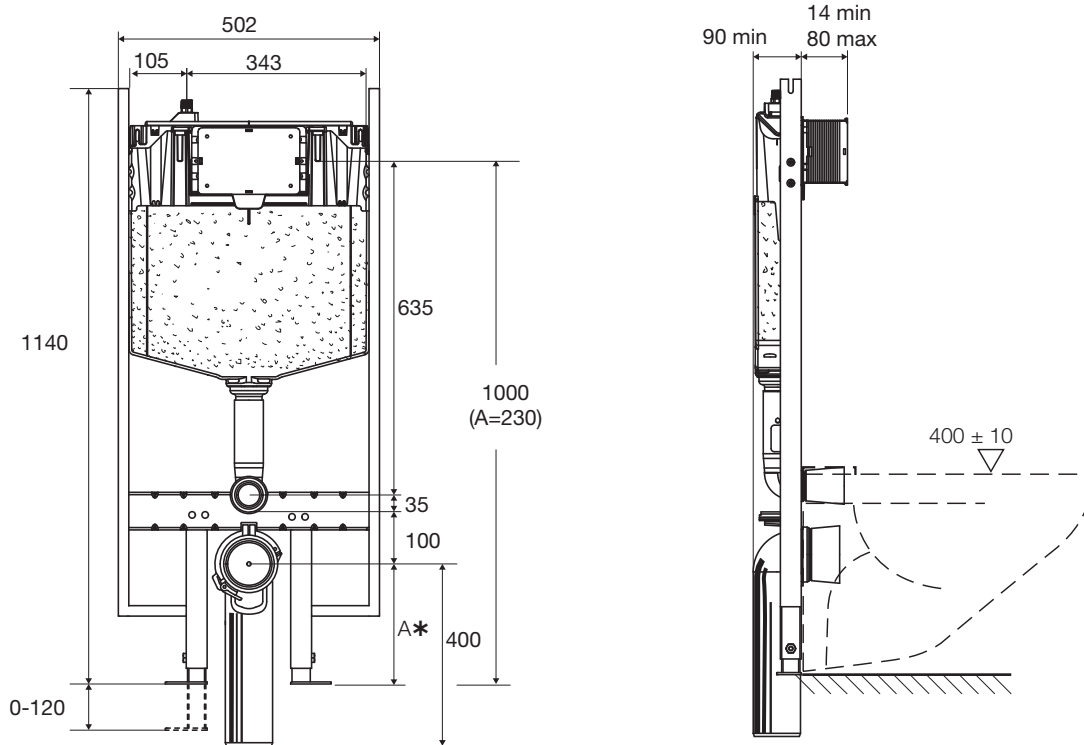
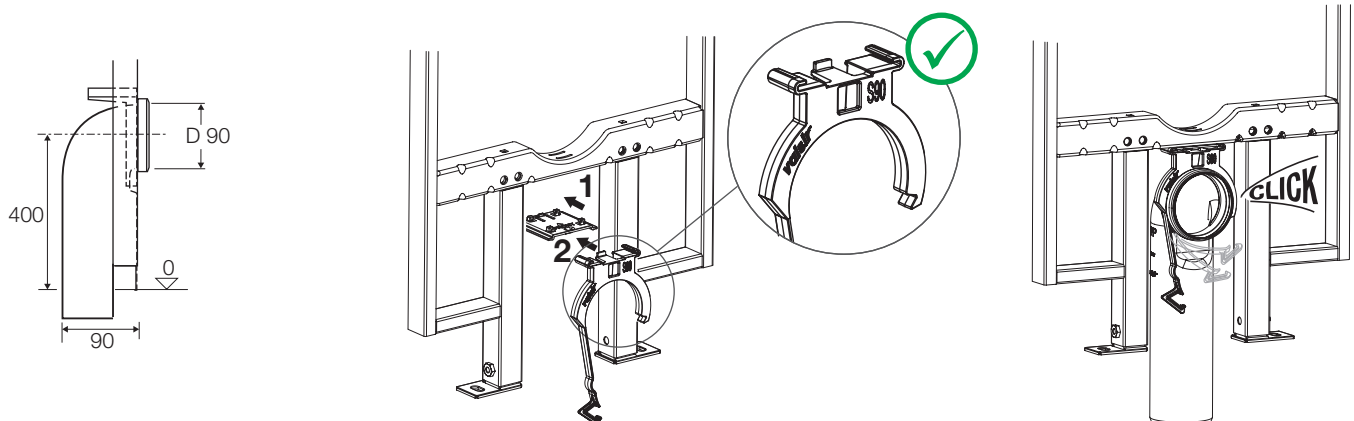


FLUSHCISTERN

BLOCK S90



* Controllare le quote di installazione del WC. - *Verify the installation measurements of the WC.*
 Contrôler les côtes de l'installation du WC. - *Bitte überprüfen Sie die Einbaumaße der Toilette.*
 Ελέγξτε τις διαστάσεις για την εγκατάσταση του WC.



Si garantisce un perfetto risciacquo solo su vasi omologati per la quantità d'acqua prevista dalla cassetta.

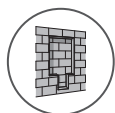
A perfect flush only on test-proven pans with suitable capacity is guaranteed.

L'on garantit un parfait rinçage sur des cuvettes homologuées et pour la quantité d'eau préconisée.

Man garantiert eine sehr gute Spülung nur auf WC, die eine angemessene Fassung vermögen.

Εξασφαλίζεται η άριστη εκκένωση μόνο για λεκάνες που έχουν πιστοποίηση για την προβλεπόμενη από το καζανάκι ποσότητα νερού.

Tutte le quote riportate sono espresse in mm. - *All the dimensions are in mm.* - *Toutes les dimensions précisées sont exprimées en mm.* - *Alle Massangaben in mm.* Όλες οι διαστάσεις αναφέρονται σε mm.



Sistema a murare.
Built-in system.
Système a encastrer.
Einbausystem.
Σύστημα εντοιχισμού.



Sistema con pareti in legno.
System with wooden walls.
Système avec paroi en bois.
System mit Holzwänden.
Σύστημα για ξύλινους τοίχους.



Sistema a pareti leggere.
System for light walls.
Système avec paroi légère.
System mit Leichtbauwänden.
Σύστημα για ελαφρά τοιχεία.



Sistema con rivestimento a secco.
System with dry walls.
Système avec paroi sèche.
System mit Trockenverkleidung.
Σύστημα με επικάλυψη σοβά.



Sistema con fissaggio su binario.
Rail-mounting system.
Système avec fixation sur structures métalliques.
System mit Schienen.
Σύστημα στήριξης σε ράγες.

Concealed dual flushing cistern with a plastic body incorporating an inlet valve and dual flush outlet valve. The cistern includes an AC air gap, brass isolation valve and flexible stainless steel braided hose assembly. The outlet valve operates via a two push button assembly. Maximum working pressure 10.0 bar. For use with cold water only.

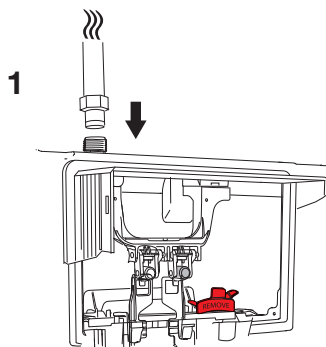
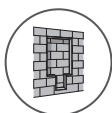
Installation Requirements and Notes under the Water Supply (Water Fittings) Regulations 1999 in England and Wales, the Water Byelaws 2004 in Scotland and the Water Supply (Water Fittings) Regulations (Northern Ireland) 2009.

1. An "Approved" single check valve or some other no less effective backflow prevention device providing backflow prevention protection to at least fluid category two shall be fitted at the point of connection(s) between the water supply and the fitting or appliance.
2. A servicing valve shall be installed on the supply to the fitting in a readily accessible location.
3. An inlet strainer or line strainer shall be provided at the inlet.

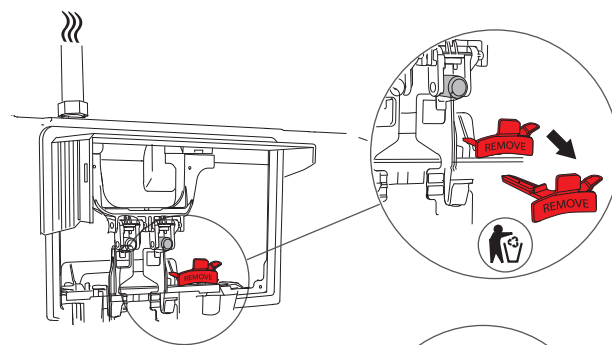
MONTAGGIO

ASSEMBLY - MONTAGE - MONTAGE - ΣΥΝΑΡΜΟΛΟΓΗΣΗ

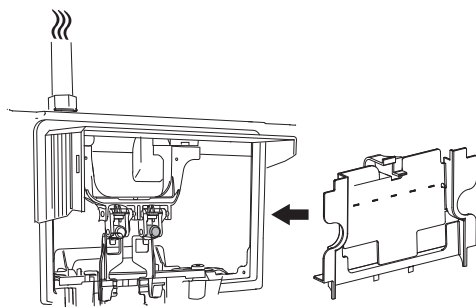
STEP
1/2



2

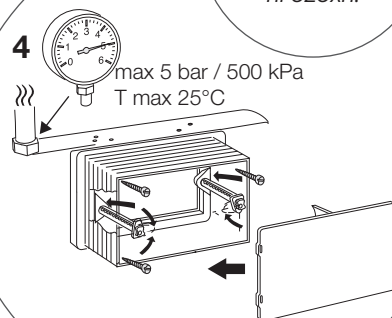


3



For UK and Singapore only: a WRAS approved single check valve is required to be installed immediately upstream of the stop valve at the inlet of the product.

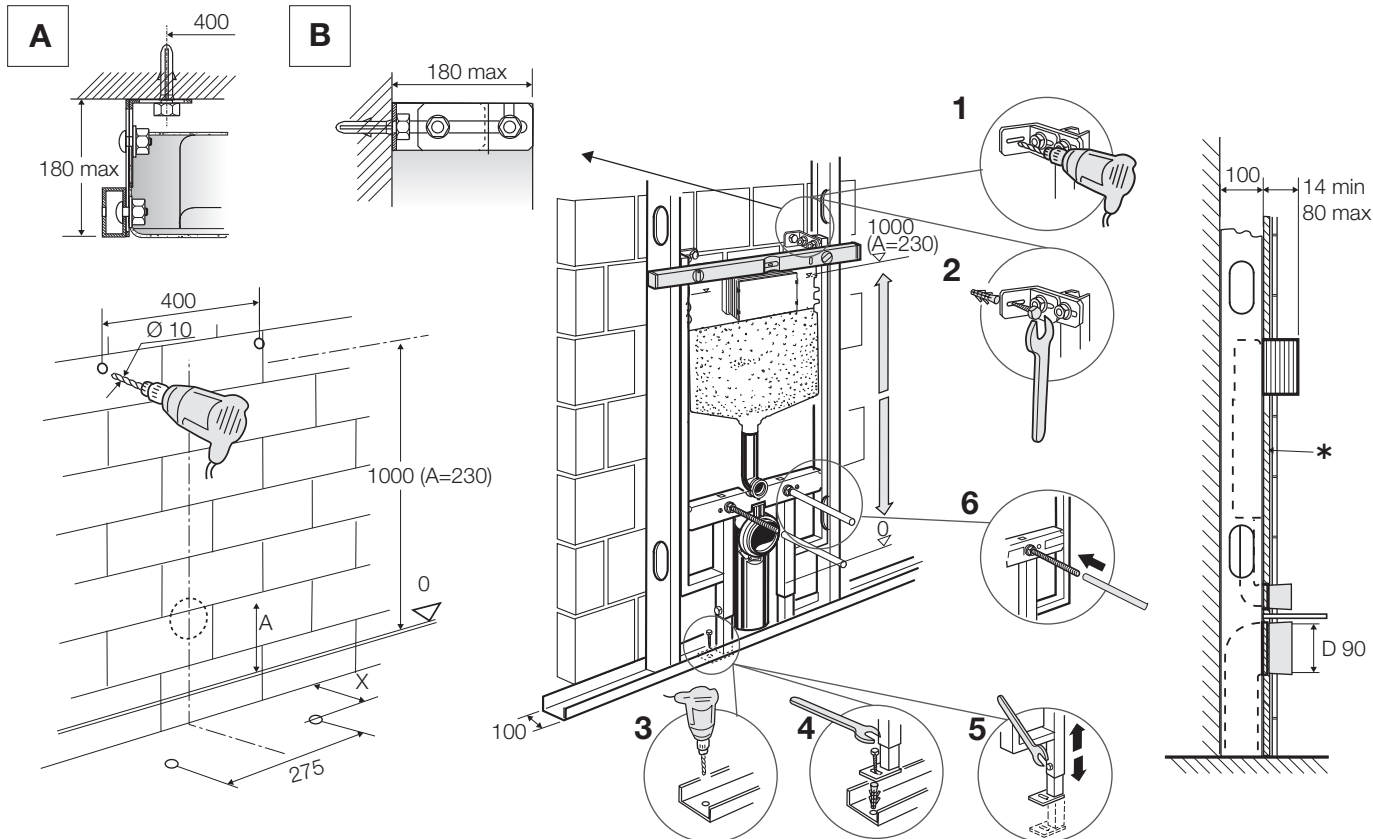
4



ATTENZIONE!
ATTENTION!
ACHTUNG!
ΠΡΟΣΟΧΗ!

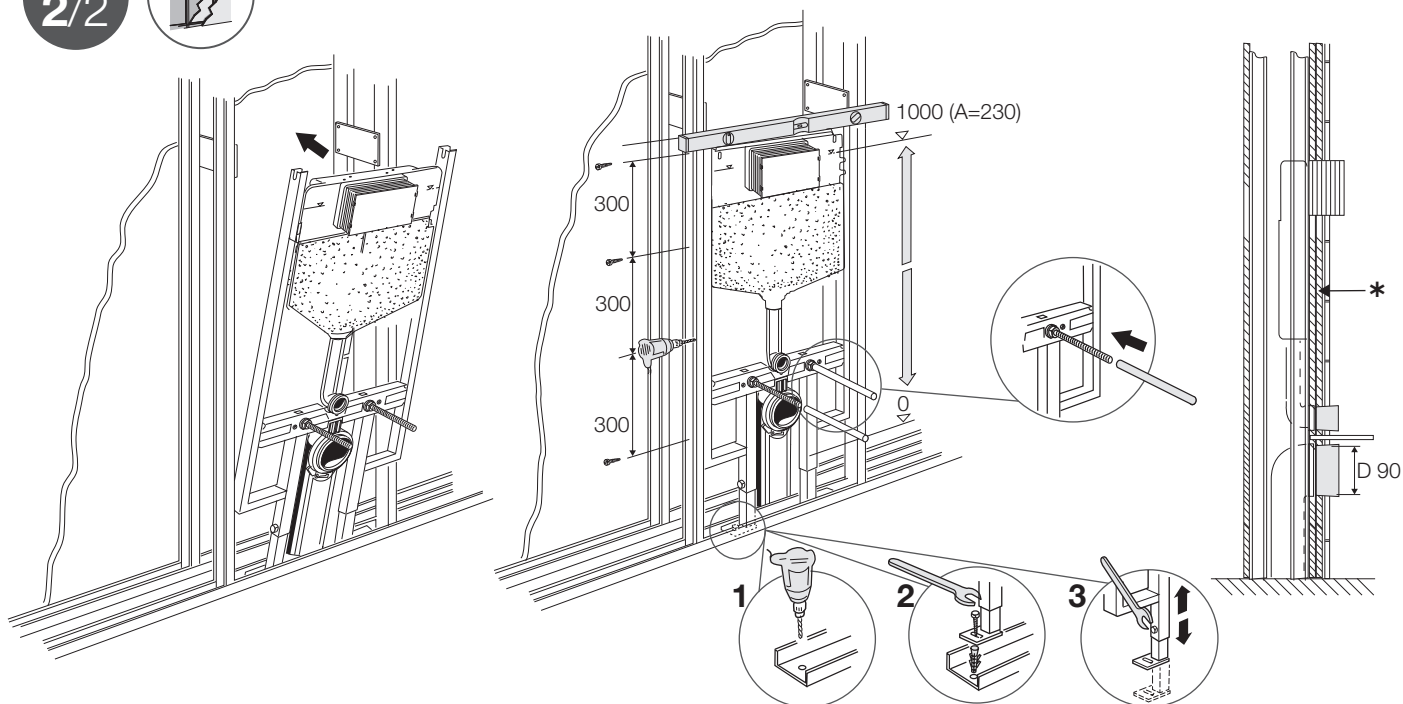
max 5 bar / 500 kPa
T max 25°C

STEP
2/2



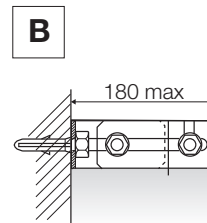
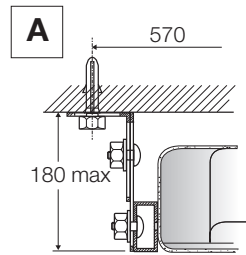
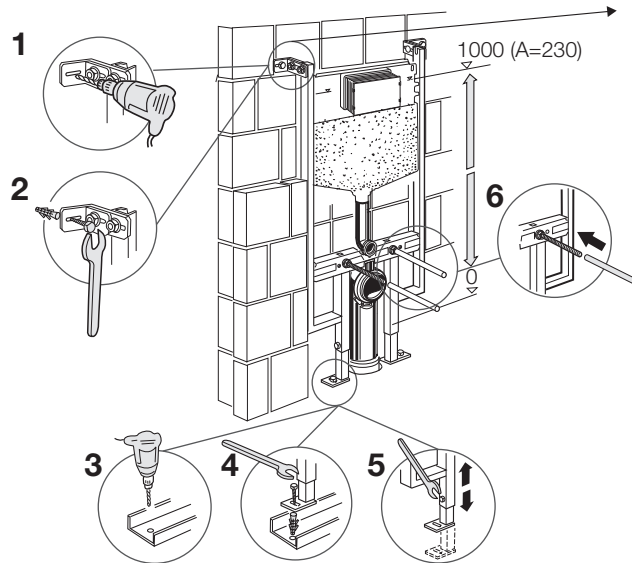
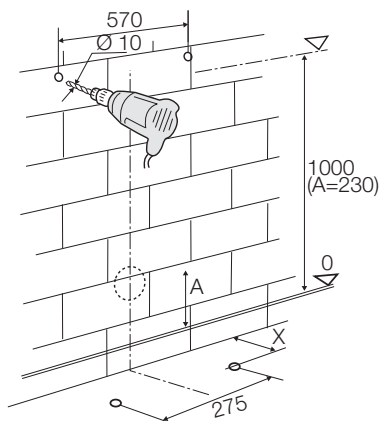
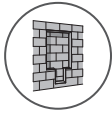
* Spessore del pannello 1x25 mm o 1x18 mm o 2x13 mm. - Panel thickness 1x25 mm or 1x18 mm or 2x13 mm.
Épaisseur de cloison 1x25 mm ou 1x18 mm ou 2x13 mm. - Vorwanddicke 1x25 mm oder 1x18 mm oder 2x13 mm.
Πάχος του πάνελ 1x25 mm ή 1x18 mm ή 2x13 mm.

STEP
2/2

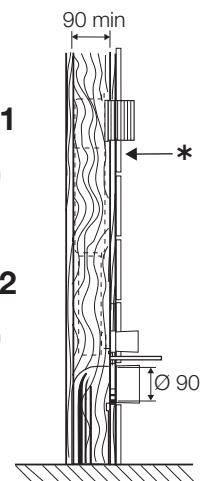
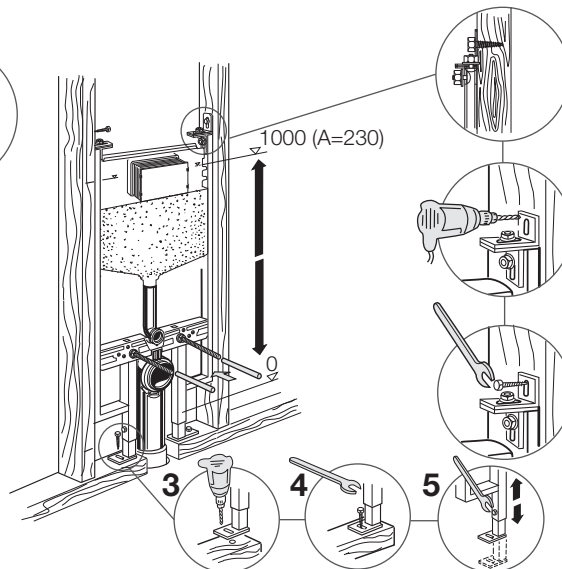
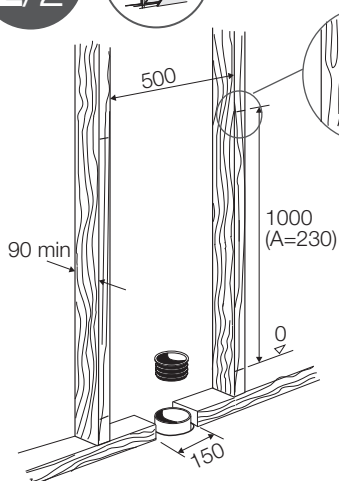


* Spessore del pannello 1x25 mm o 1x18 mm o 2x13 mm. - Panel thickness 1x25 mm or 1x18 mm or 2x13 mm.
Épaisseur de cloison 1x25 mm ou 1x18 mm ou 2x13 mm. - Vorwanddicke 1x25 mm oder 1x18 mm oder 2x13 mm.
Πάχος του πάνελ 1x25 mm ή 1x18 mm ή 2x13 mm.

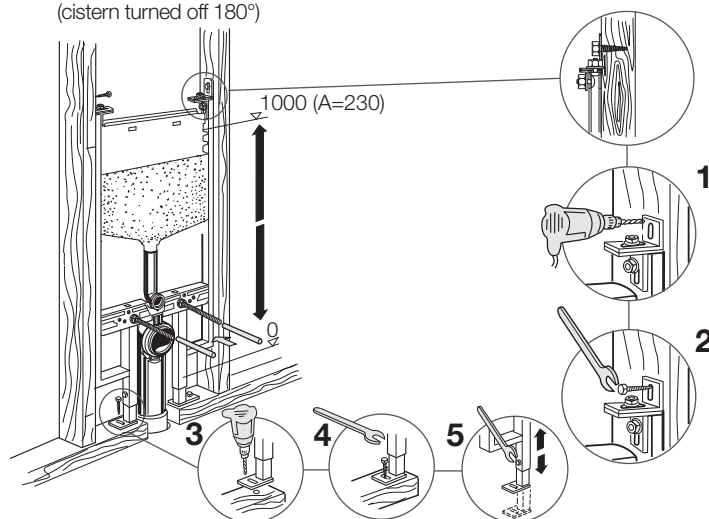
STEP 2/2



STEP 2/2



Inspection opening on the back wall
(cistern turned off 180°)



* Spessore del pannello 1x25 mm o 1x18 mm o 2x13 mm.
Panel thickness 1x25 mm or 1x18 mm or 2x13 mm.
Epaisseur de cloison 1x25 mm ou 1x18 mm ou 2x13 mm.
Vorwanddicke 1x25 mm oder 1x18 mm oder 2x13 mm.
Πάχος του πάνελ 1x25 mm ή 1x18 mm ή 2x13 mm.